





SHREEDHAR   
BHAkti



embrace  
effulgent life out here.



experience an elite lifestyle,  
with all worldly possessions

It's just not a **3 BHK**,  
It's a **greener 3 BHK!**





refill your zeal in this delightful zephyr

a joyous  
aesthetic  
vibe





a serene  
splendid  
sight

a completely overwhelming and soulfully satisfying outlook...!





a finessing  
architectural  
work

a great union of contemporary with  
modernity filled with a wonderful verdure  
which make this even more adorable.







congruity between ample green plantations and harmonious environ is so splendidous to produce felicity

a delightful tranquility



greenery from everywhere and a perfect precision for amazing ambience which one might have wished



an extensive comfort







private foyers & balcony





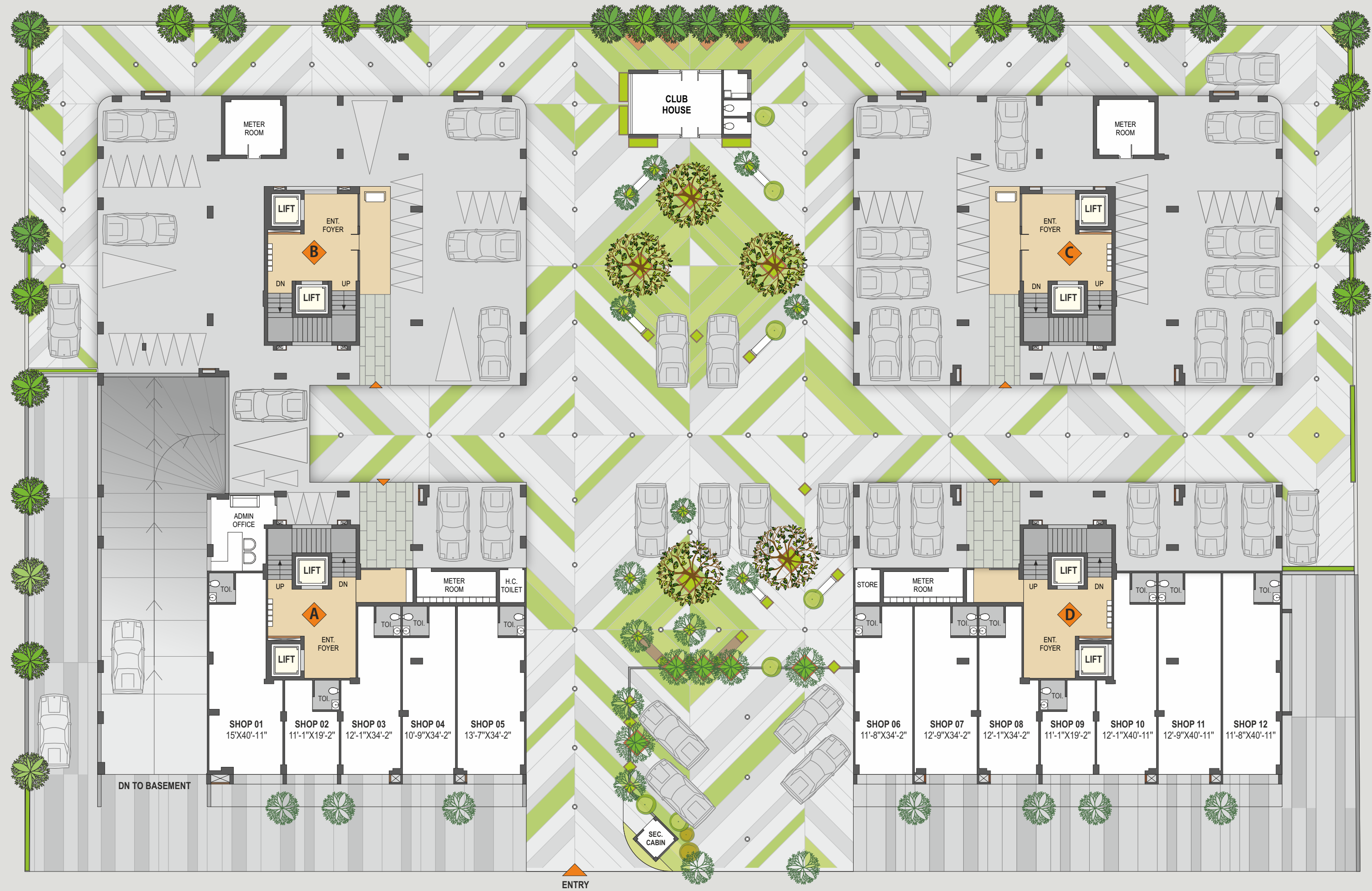


## embellish your ebullient life

a magical interlacing of  
captivating ambience and  
magnificent luxury blending it up  
to make one's living more vivified



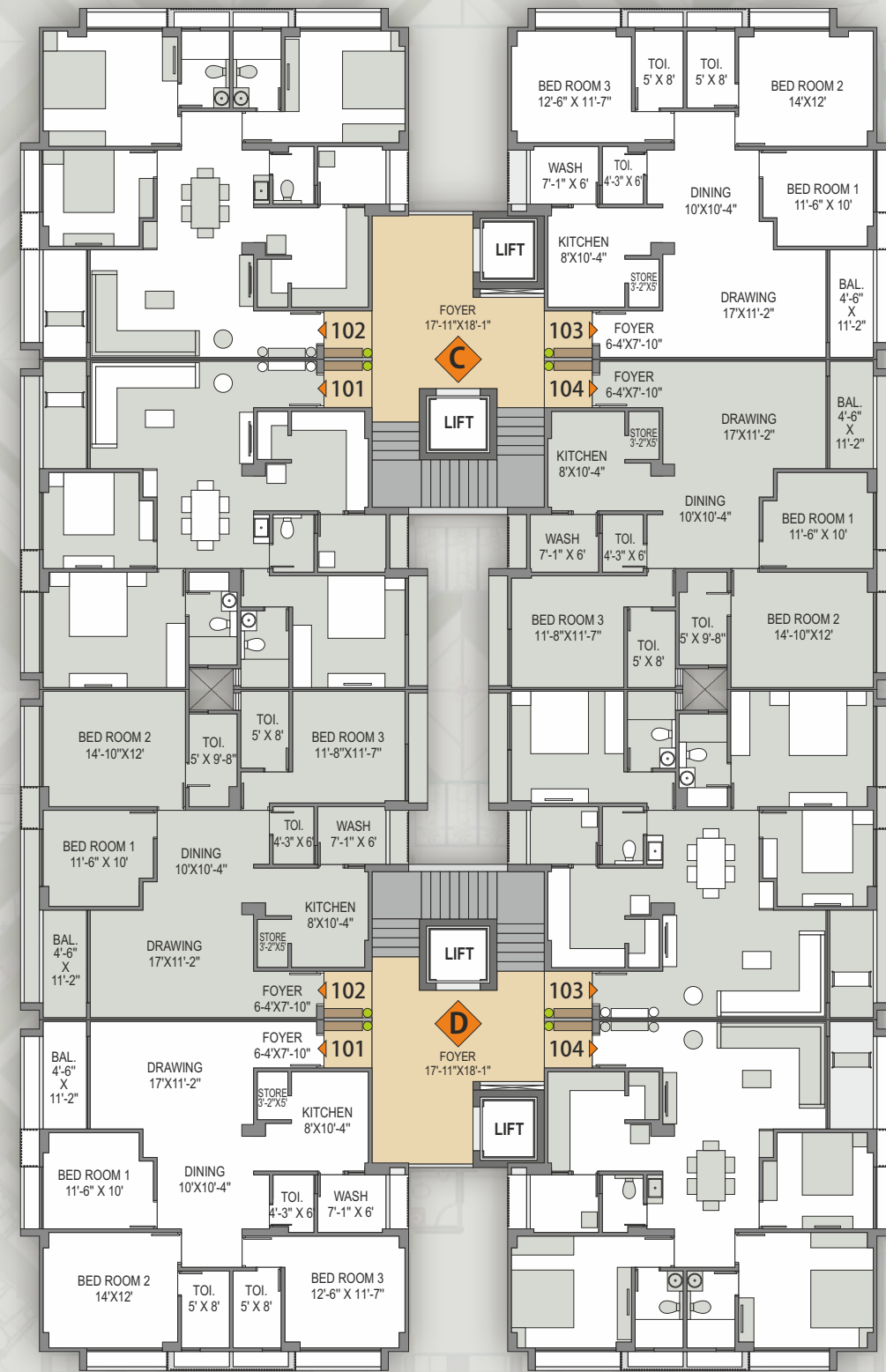
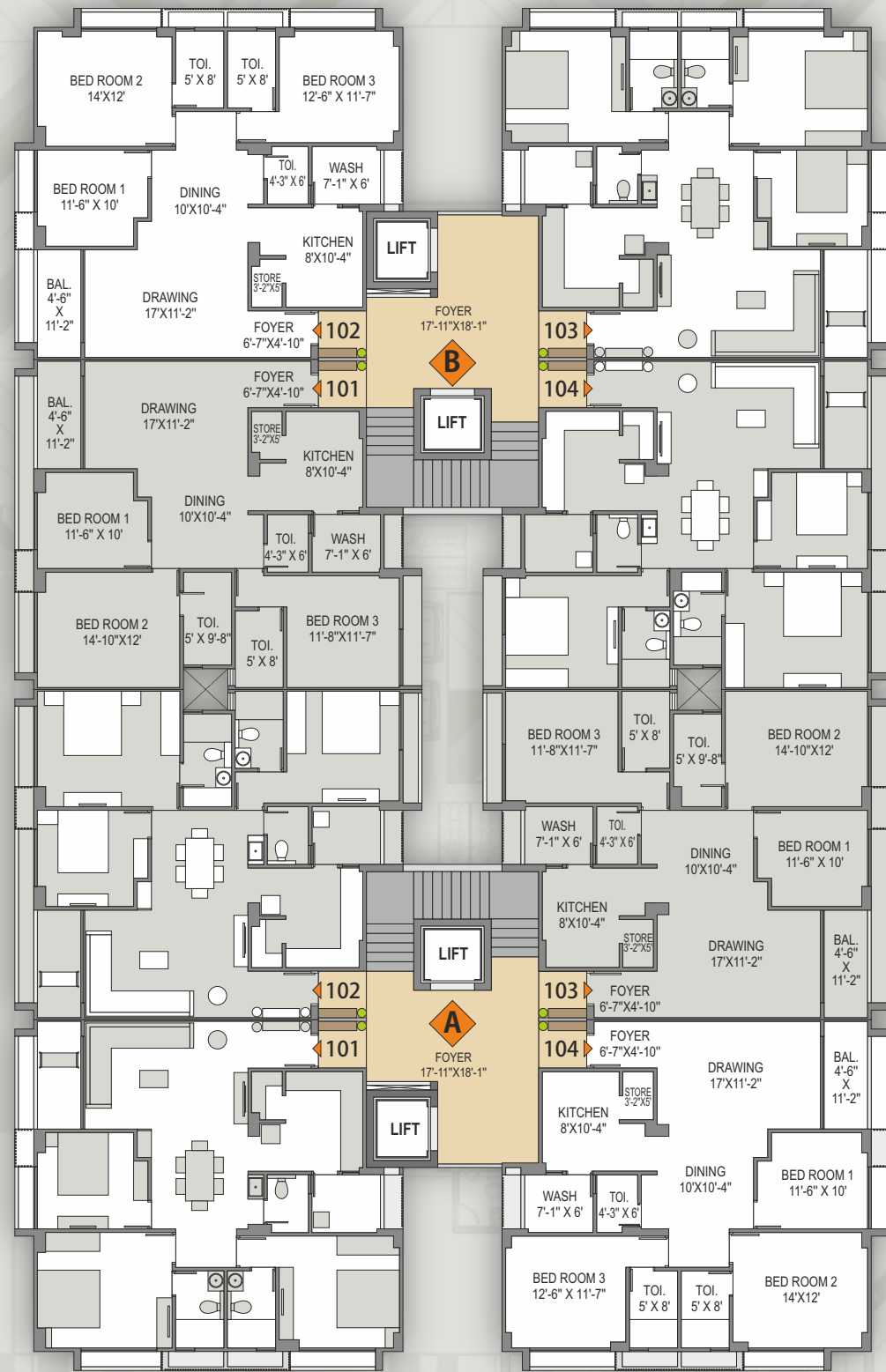




Ground Floor Plan



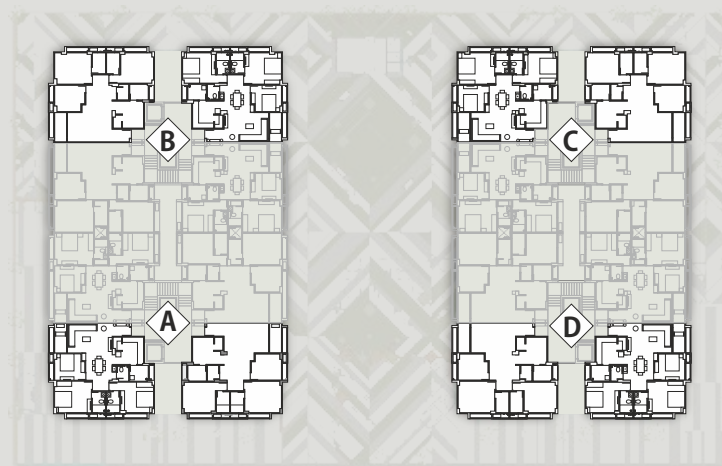




Building Layout Plan







Type 1 A & D - 101, 104  
B & C - 102, 103

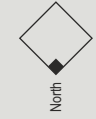


Typical Floor Plan

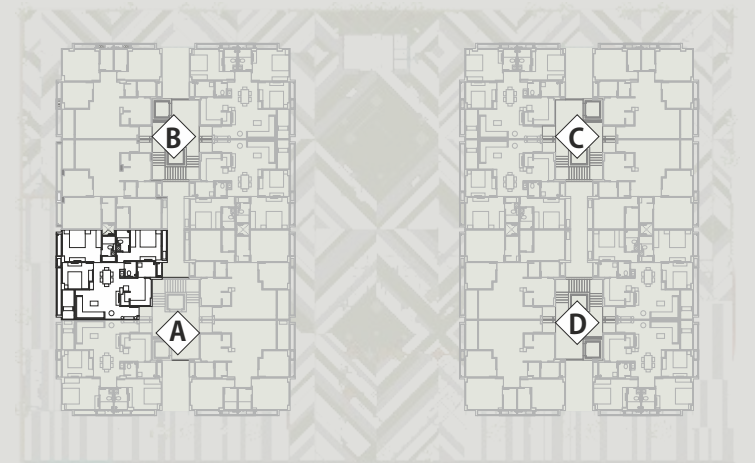


Unit Plan





Type 2 A & D - 102, 103  
B & C - 101, 104



Typical Floor Plan

Unit Plan



### Salient Features

-  Well planned 3 BHK Flats
-  Two Branded Elevators in each Block
-  Exclusive Entrance Foyer with Rich Finishing
-  24/7 Hi – Tech Security with CCTV Cameras
-  Attractive Club House
-  Beautiful Landscaping
-  Pleasant Sit – Outs.
-  Power Backup Generator Set for Common Areas, Elevators and Garden.
-  Basement Parking

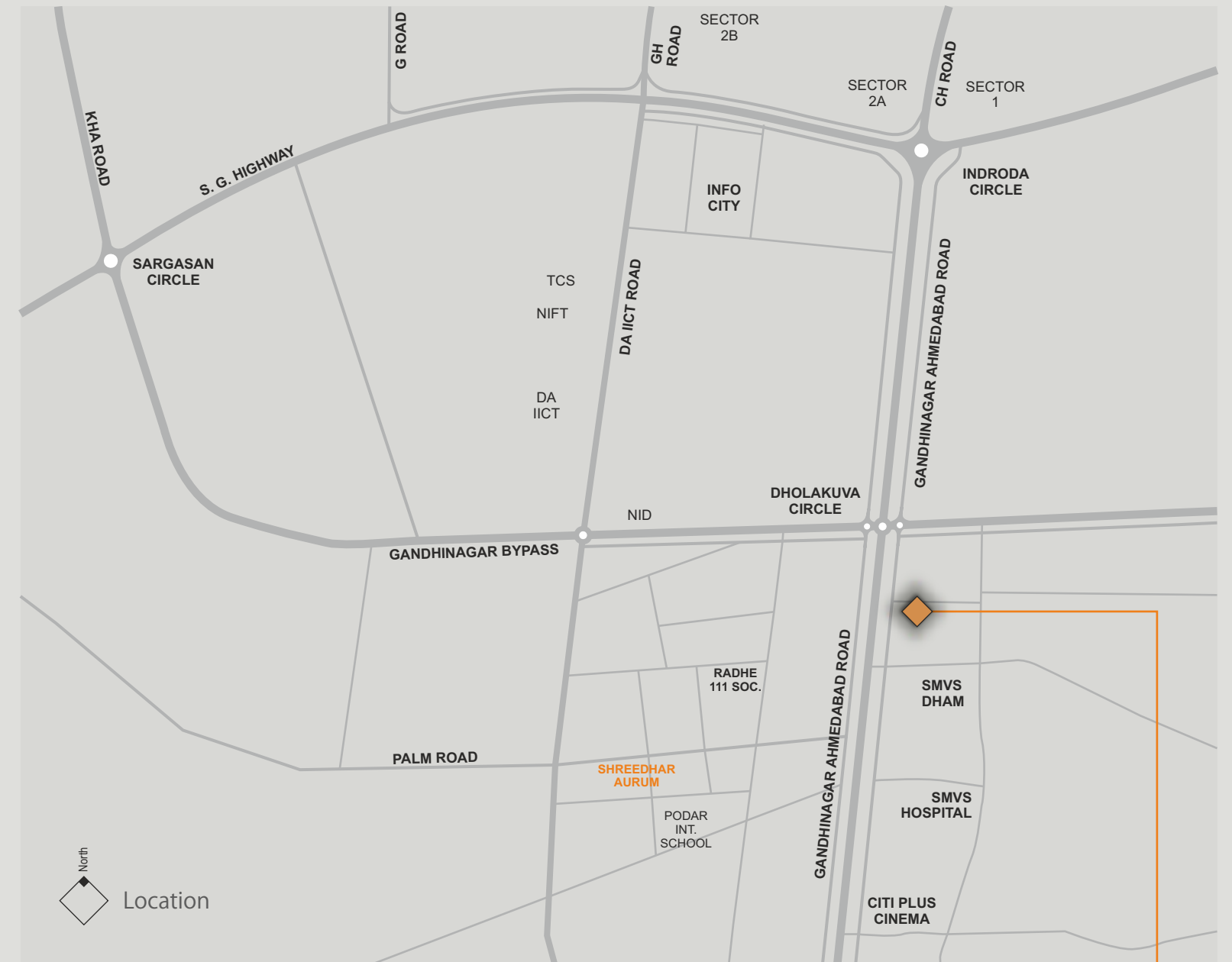
### Specification

-  **Building Structure** Earthquake resistant RCC frame Structure
-  **Flooring**  
Living, Dining, Bedrooms, Kitchen, Balcony, Wash  
Designer Tile flooring  
Anti-skid Matt finish Tile
-  **Kitchen**  
Platform Tiles  
Polished Granite with SS / Acrylic Sink  
Designer wall Tile dado above  
Granite Platform up to lintel level
-  **Bathrooms**  
Wall  
Decorative Tiles up to lintel level  
Plumbing  
Branded Concealed Bath Fittings  
Sanitary  
Premium quality bath fittings and sanitary wares
-  **Doors**  
Main Door  
Veneer finish flush door with quality lock set  
Internal Doors  
Flush Doors with SS hardware
-  **Windows**  
Window Sill  
Granite jambs for all windows  
All Areas  
High quality powder coated Aluminum windows
-  **Electric**  
All Areas  
Concealed Wiring with adequate number of points in each room with branded Modular Switches.  
AC provision in all bed rooms with concealed drain pipe and copper cabling.
-  **Color**  
Internal  
Wall Cement plaster / putty finish  
External  
Double Coat mala Plaster with Texture finish

### Brands we use

<b>Steel</b>	ISI
<b>Cement</b>	UltraTech, Ambuja, Sanghi, JK Lakshmi
<b>Tiles</b>	Kajaria, Simpolo, Qutone, Mozart
<b>Aluminum</b>	Jindal
<b>Sanitary ware</b>	Jaquar, Hindware, Cera

<b>Electric</b>	RR Kable, Havells, Schneider, Anchor, Legrand
<b>Elevator</b>	KONE, Omega
<b>Paint &amp; Finish</b>	Birla White/JK Lakshmi Putty, Asian Paints, Nerolac
<b>Plumbing</b>	Astral, Supreme, Ashirvad
<b>Glass</b>	Modiguard, Saint-Gobain



Project by



**Corporate Office**  
605/6/7, Shalin Complex, 6 th. Floor, Plot No. 24, Sector 11,  
Gandhinagar - 382011, Gujarat, India. Ph. : 079 23 22 38 22

Site :  
FP NO. 37/1, Sub Plot No. 2, Nr. Swaminarayan Dham, Kudasan, Gandhinagar.

SHREEDHAR  
BHAKTI

81601 47020 [www.upasanainfra.com](http://www.upasanainfra.com) | [info@upasanainfra.com](mailto:info@upasanainfra.com) | [f](https://www.facebook.com/upasanainfra) [i](https://www.instagram.com/upasanainfra) / upasanainfra  
RERA No. : PR/GJ/GANDHINAGAR/GANDHINAGAR/Other/MAA07091/030620 [www.gujrera.gujarat.gov.in](http://www.gujrera.gujarat.gov.in)



#### DISCLAIMER

Stamp Duty & Registration charges would be charged extra ♦ GST and any such additional taxes would be charged extra ♦ Maintenance contribution would be charged extra ♦ Internal and external changes would not be permitted ♦ Terrace rights would rest with Developers ♦ Any additional FSI at present or in future would be availed by the developer and no member would claim any right for the same. ♦ Gas, UGVCL, Underground Drainage & Water connection charges would be extra. ♦ At the time of cancellation of booking 10% service charge of the total amount paid shall be levied & balance payment made only after the next available booking.

#### Note

This brochure is for information purpose only. All the dimension, architectural views and photographs are for reference only.  
This brochure does not form a part of the agreement or any legal document.  
The printed images are the artistic impression.