



Address :

Shriprad Aayansh,
Tp- 26, B/h Pramukh Abord,
Nr. Sargasan Chokdi - 382421.

Contact :

Krutik Patel | Manoj Patel
+91 99984 03251 | +91 93758 11024



Way Towards Luxury



REDEFINED DREAMS COME PERFECT



SRIPRAD
AAYANSH




3 BHK LUXURIOUS LIVING

this avenue does not provide homes for aspiring people, but a lifestyle
to live higher on a pedestal.




SRIPRAD
AAYANSH


SPACIOUS & BEAUTY
a place where you find the sense of spaciousness
& infinite happiness.

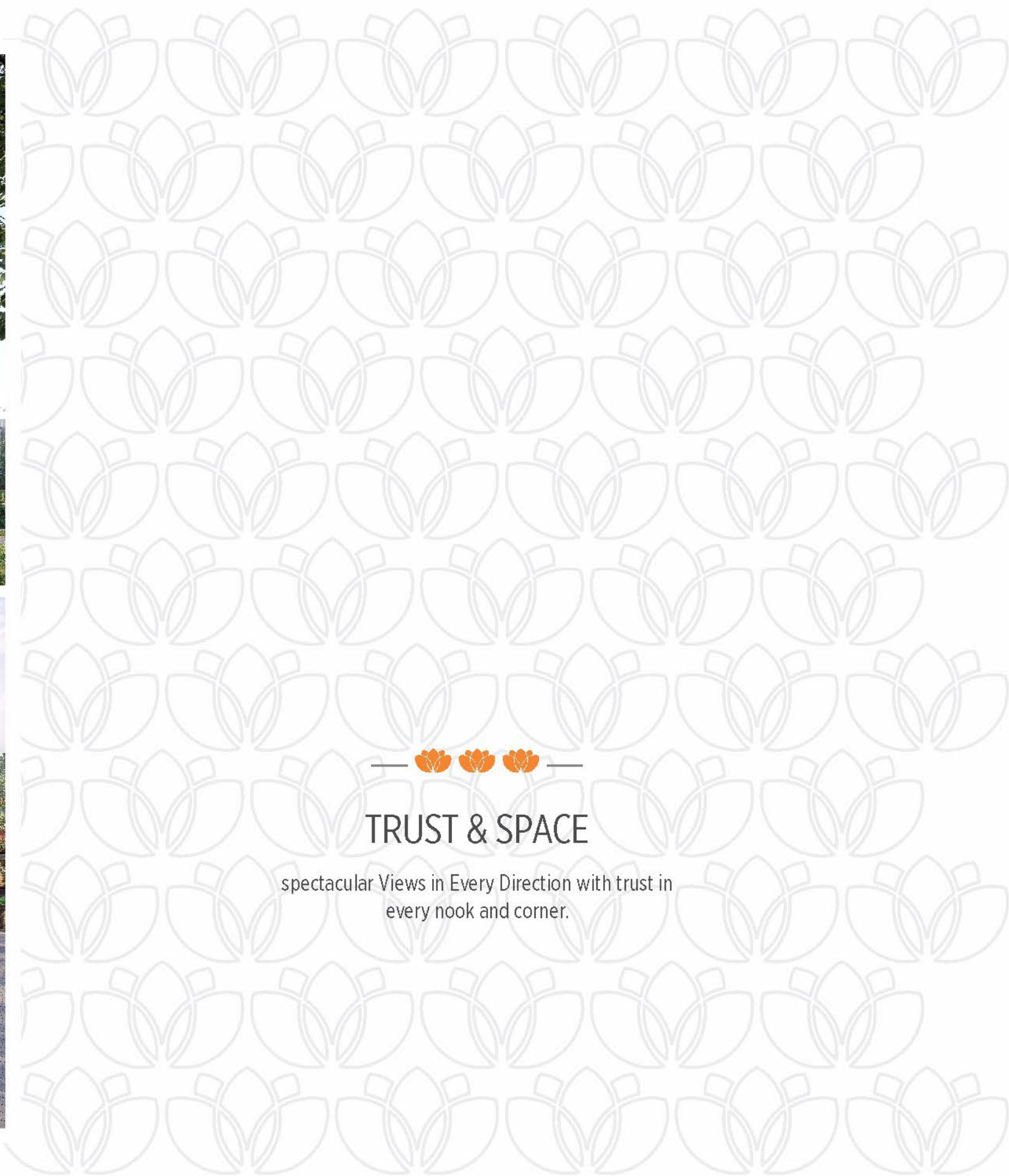




— 🌸 🌸 🌸 —
VISION & VIEW

the perfect start to your adventure, because it's simply
the best with new view





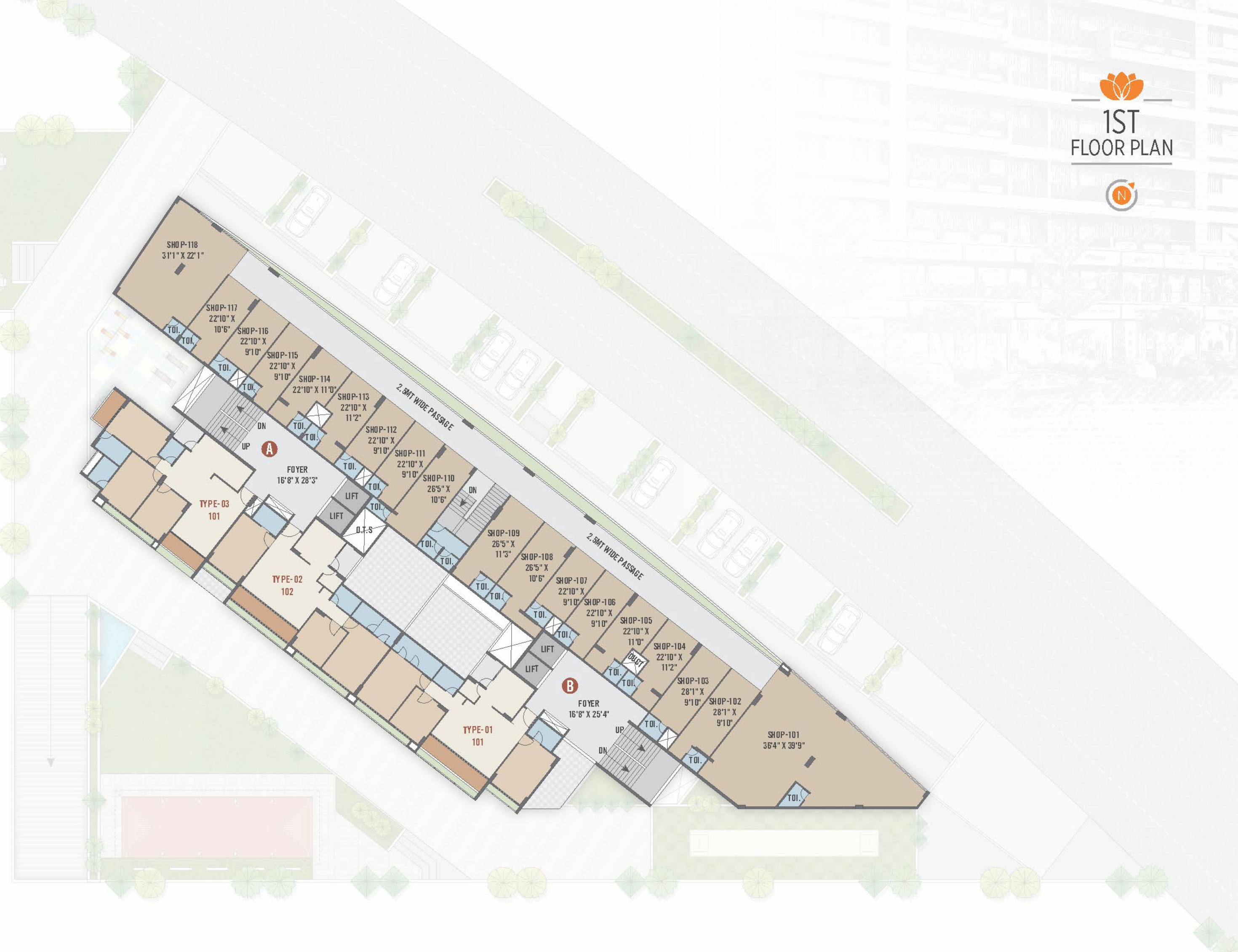
TRUST & SPACE

spectacular Views in Every Direction with trust in every nook and corner.





1ST FLOOR PLAN



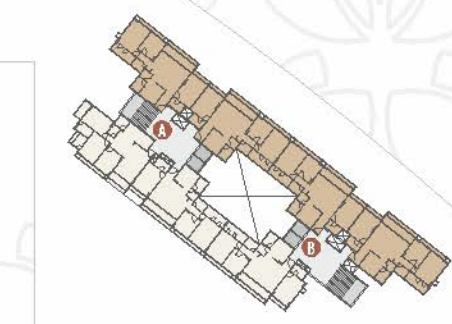
2ND FLOOR PLAN



3RD TO 14TH
FLOOR PLAN




3 BHK
UNIT PLAN



(TYPE - 1)

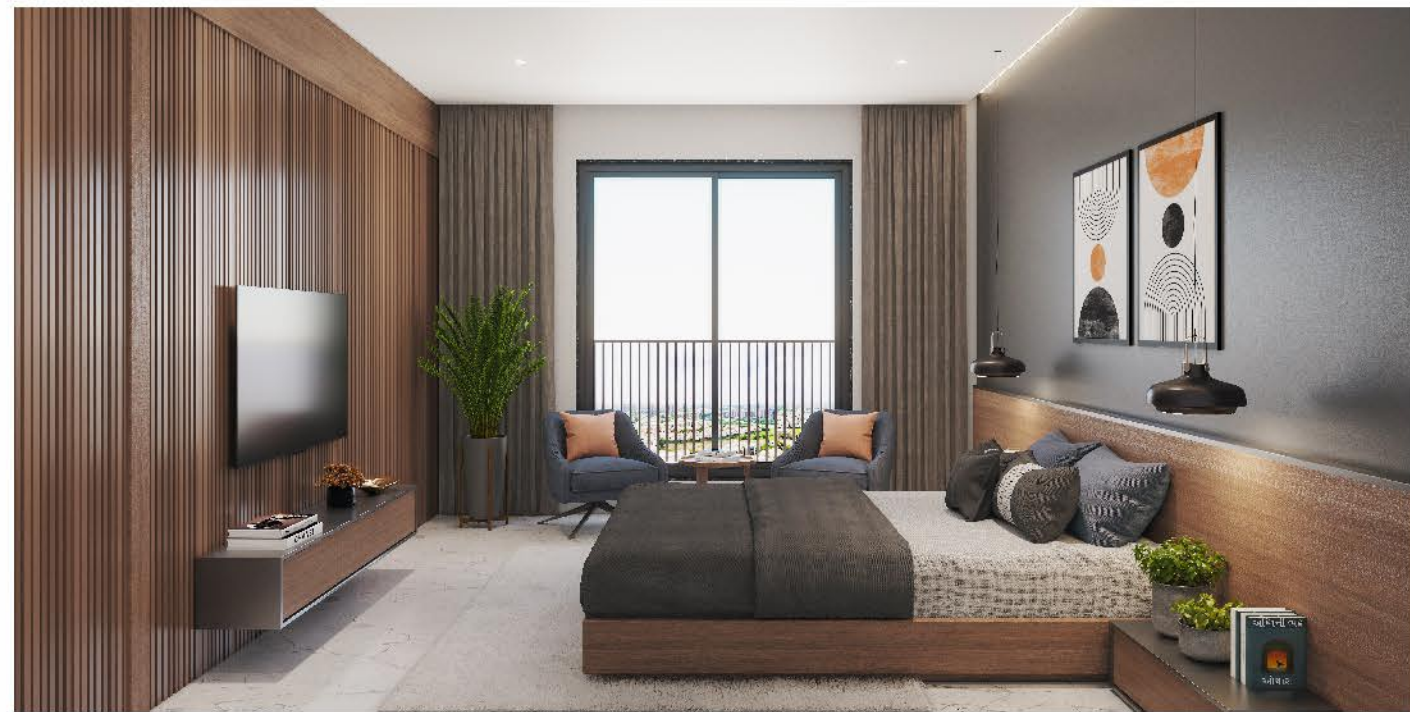

3 BHK
UNIT PLAN



(TYPE - 2)


3 BHK
UNIT PLAN





— 🌸 🌸 🌸 —
ALL YOU NEED IS A BIG LEAP OF FAITH



AMPLE OF AMENITIES FOR A CLASSY LIFESTYLE

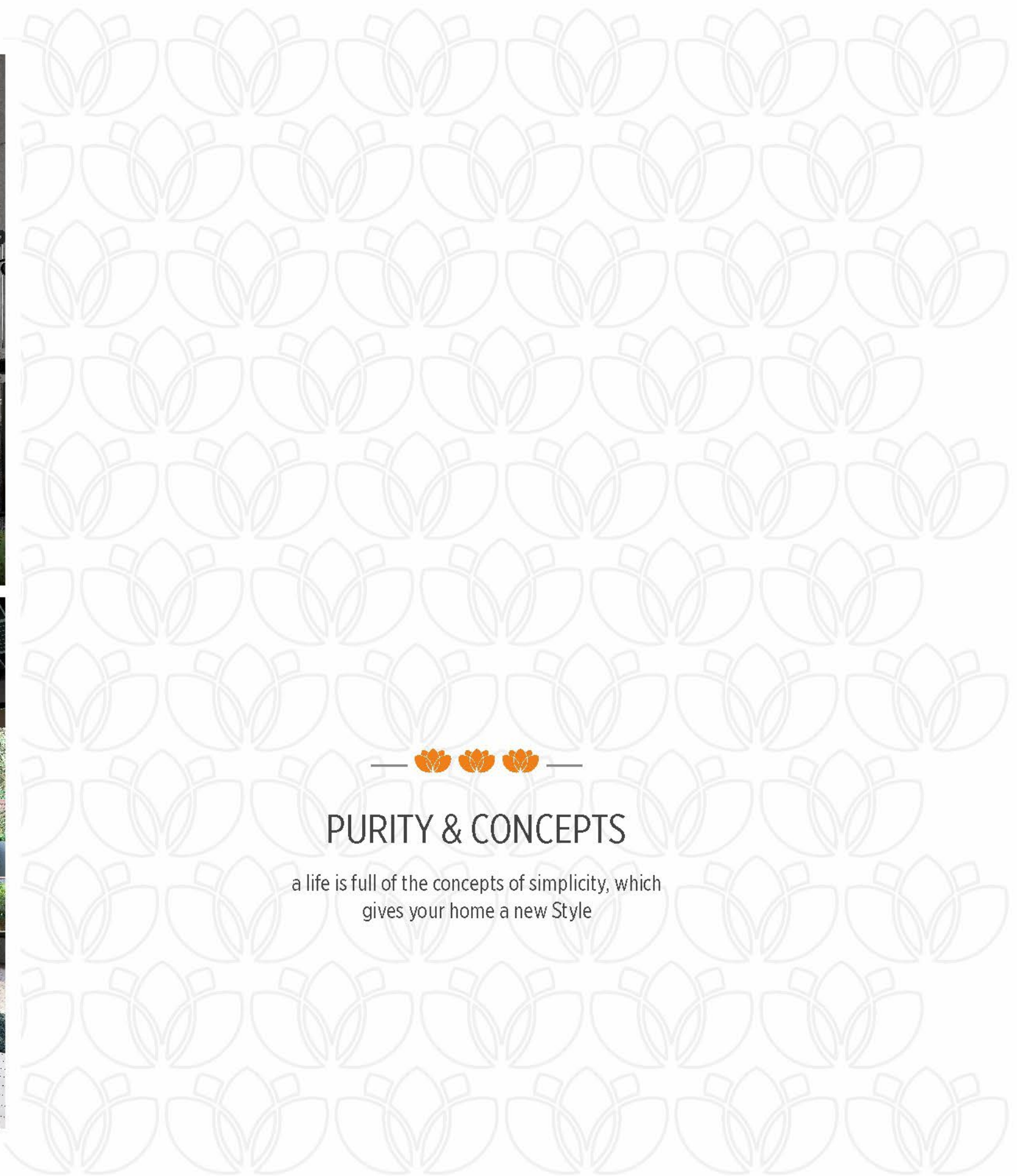


SRIPRAD AAYANSH

- ENTRY GATE
- GARDEN
- GYMNASIUM
- YOGA SPACE
- PARKING
- TERRACE GARDEN
- SEATING AREA
- CHILDREN PLAY AREA
- BOX CRICKET
- 24 HRS WATER SUPPLY
- WATER BODY
- SPLASH POOL
- INDOOR GAME
- LIBRARY
- LIFT
- GAZEBO
- HOME THEATRE
- FIRE SAFETY
- ELECTRICAL CHARGING
- A.C. FOYER
- 24 X 7 SECURITY
- CCTV CAMERA
- INTERNAL ROADS

EXTRAORDINARY AMENITIES

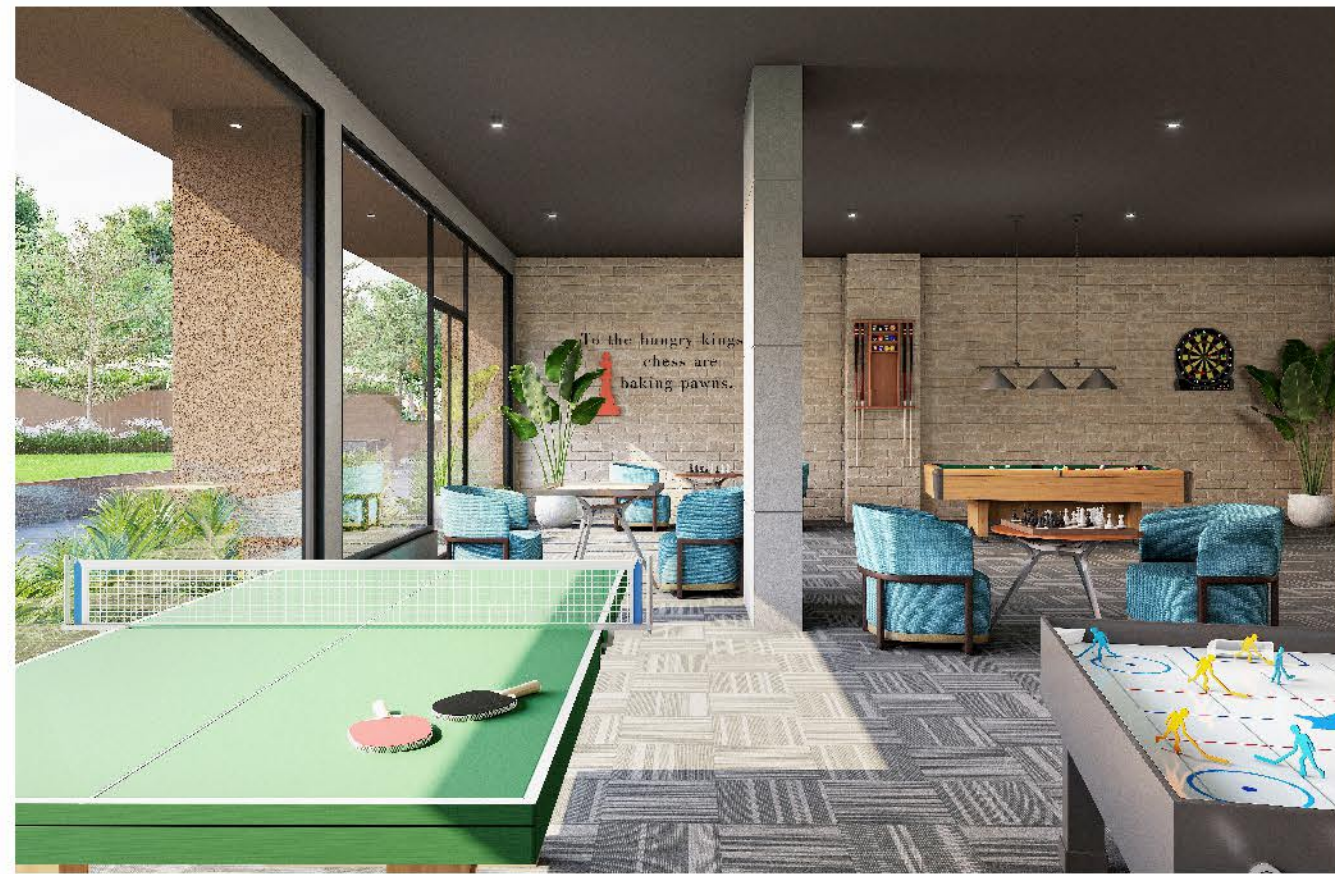
ideal & breathtaking location, spacious & luxurious design quality construction, ultra modern club amenities & much more...



PURITY & CONCEPTS

a life is full of the concepts of simplicity, which gives your home a new Style





— 🌸 🌸 🌸 —
QUALITY & NATURE

feel the tranquillity in every direction because it's designed for a natural living like nothing on earth.





SPECIFICATIONS



STRUCTURE

Earthquake resistant R.C.C work



FLOORING

Unique premium quality vitrified tiles.
China mosaic flooring in terraces.



KITCHEN

Granite top platform with S.S sink. Designer glazed tiles dado-up to lintel level.



DOOR & WINDOWS

Decorative main door with wooden frame.
All other doors are flush door with wooden frame with good quality fittings.
Aluminum sliding window with heat reflective glass.



ELECTRIFICATION

concealed copper wiring with premium modular switches.



WALL FINISH

Internal smooth cement plaster with putty finish.
External double coat sand face plaster with good quality acrylic paint.



TREATMENT

Anti termite treatment.



TOILET/PLUMBING

Designer glazed tiles up to lintel level.
Premium quality bath fitting & sanitary wares.



NOTE :
1.) Commencement and timely execution of the project is subject to all necessary approvals from relevant govt. authorities, occurrence of natural calamities or any other external factors beyond developer's control. 2.) The dimensions shown in the brochure are approximate. 3.) The developer reserves the right to change, revise or make any modification, addition, omission or alteration in the scheme as a whole or part thereof, at their sole discretion. 4.) The brochure is only for illustration & private circulation purpose & is not a legal document or a binding one. 5.) Government levies like GUDA, UGVCL, Stamp Duty, Registration charges, Legal charges, GST and any other additional charges are to be borne by the member. 6.) Subject to Gandhinagar Jurisdiction.





**SRIPRAD
AAYANASH**

Address :

Shripad Aayanash,
Tp- 26, B/h Pramukh Abord,
Nr. Sargasan Chokdi - 382421.

Contact :

Krutik Patel | Manoj Patel
+91 99984 03251 | +91 93758 11024

Rera No. :

www.gujrera.gujarat.gov.in



Developer
SRIPRAD
GROUP

Architect
THE GRID
ARCHITECTS

Str. Eng.
Rajiv



A Trendy, Luxury View